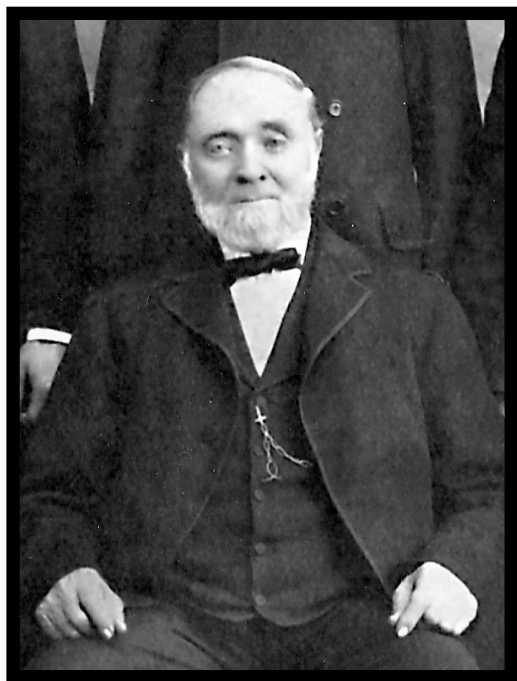
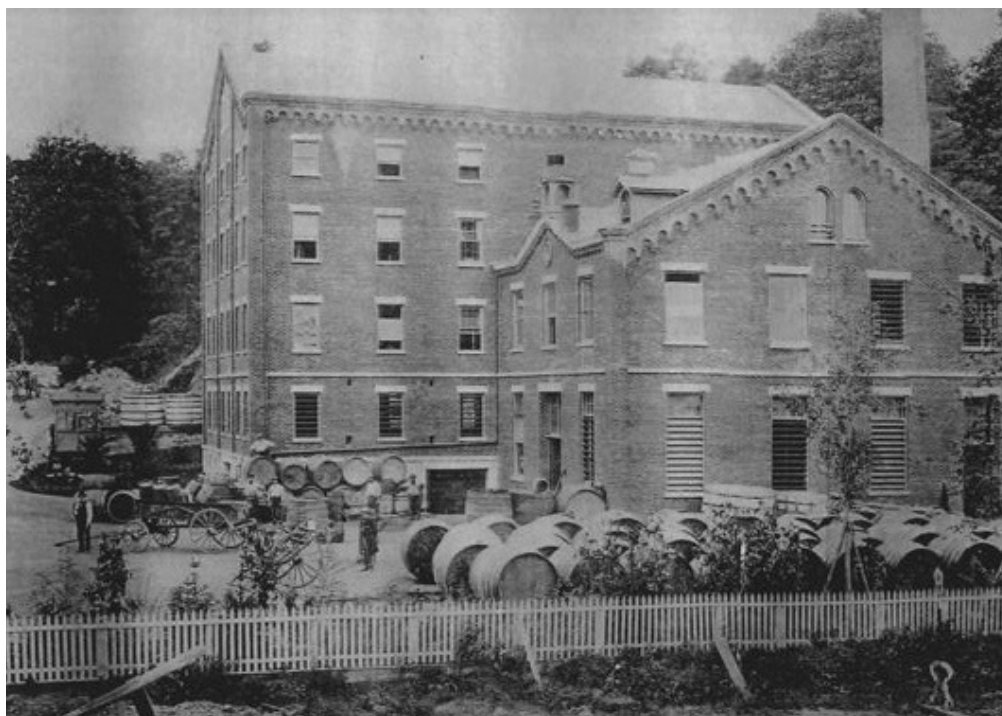


HISTORIC SITES - BIEGEN /ANCHOR/MANILLA BREWERY - DOBBS FERRY, NEW YORK

The Brewery was constructed on the Hudson River at 145 Palisade Street. The complex included a pool, waterfall, and underground storage area for beer.



Peter M. Biegen - Immigrant from Bavaria who founded brewery in 1853

Brewery

Founded in 1853, the Biegen Brewery shipped beer up and down the Hudson River, even driving sleds of beer kegs to Nyack in winter when the river was frozen over.. It became one of the major employers in Dobbs Ferry, employing many German immigrants who lived in rooming houses along Palisade Street. A dance pavilion (built above the underground storage area) attracted many visitors from nearby towns.

In 1886, Anchor Brewing Company took over ownership and expanded the brewing facilities further. In 1900, Selig Manilla bought into the business and the name changed again to Manilla Anchor Brewing Company.

In 1917, William Fix, brewmaster of the company, died. Congress had just passed the prohibition amendment and it was sent to states for ratification. The brewery was sold to a New York City brewer, production closed down and the 31 remaining workers were laid off. In Jan. 1920, sale of beer throughout the US was outlawed by the 18th Amendment to the Constitution.